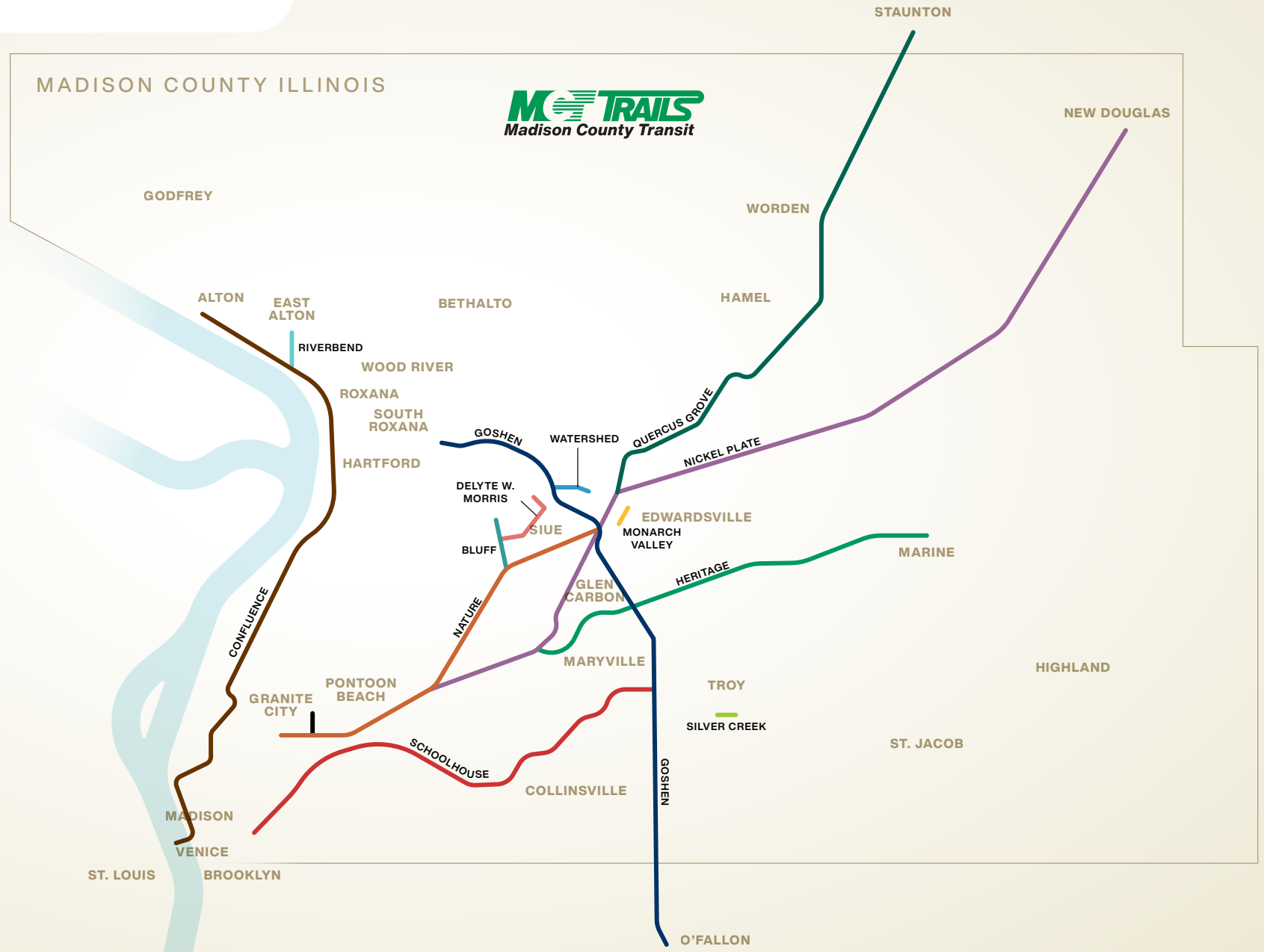


MCT Trails Capital Projects





MADISON COUNTY ILLINOIS

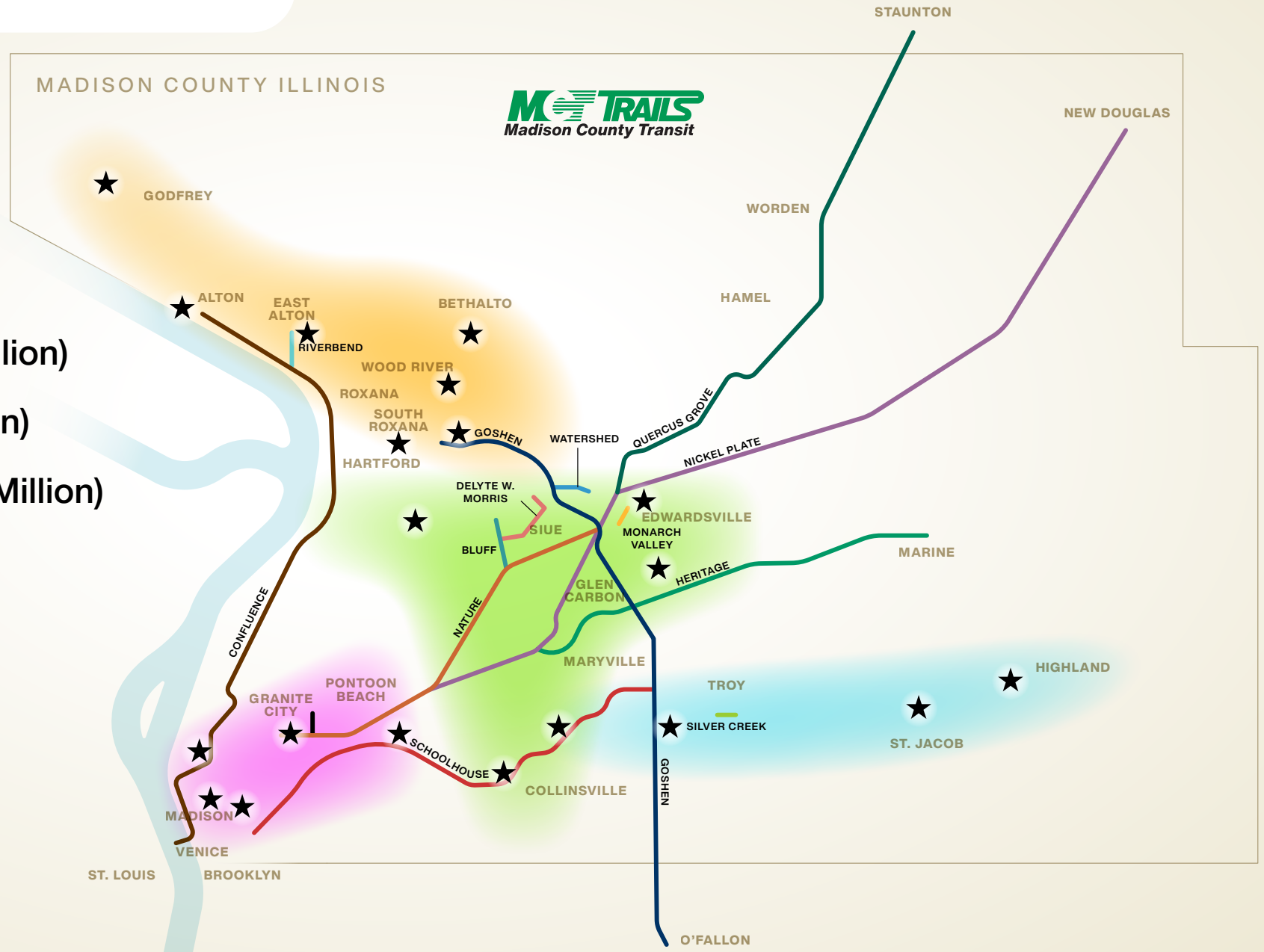


MCT Trails Capital Projects

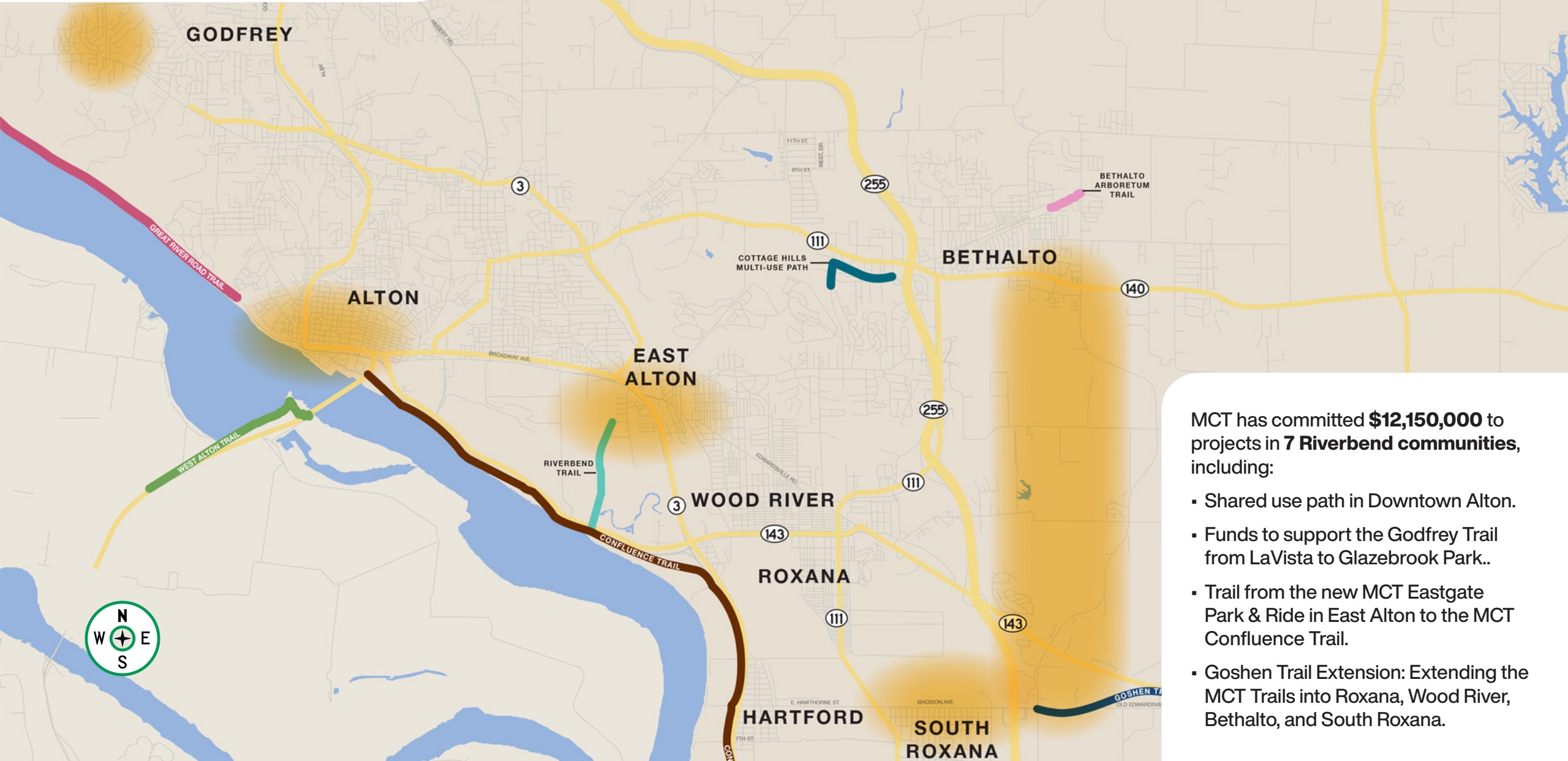


Project Zones

-  Riverbend Zone (\$12 Million)
-  Central Zone (\$4.5 Million)
-  Southwest Zone (\$10.5 Million)
-  East Zone (\$6.5 Million)



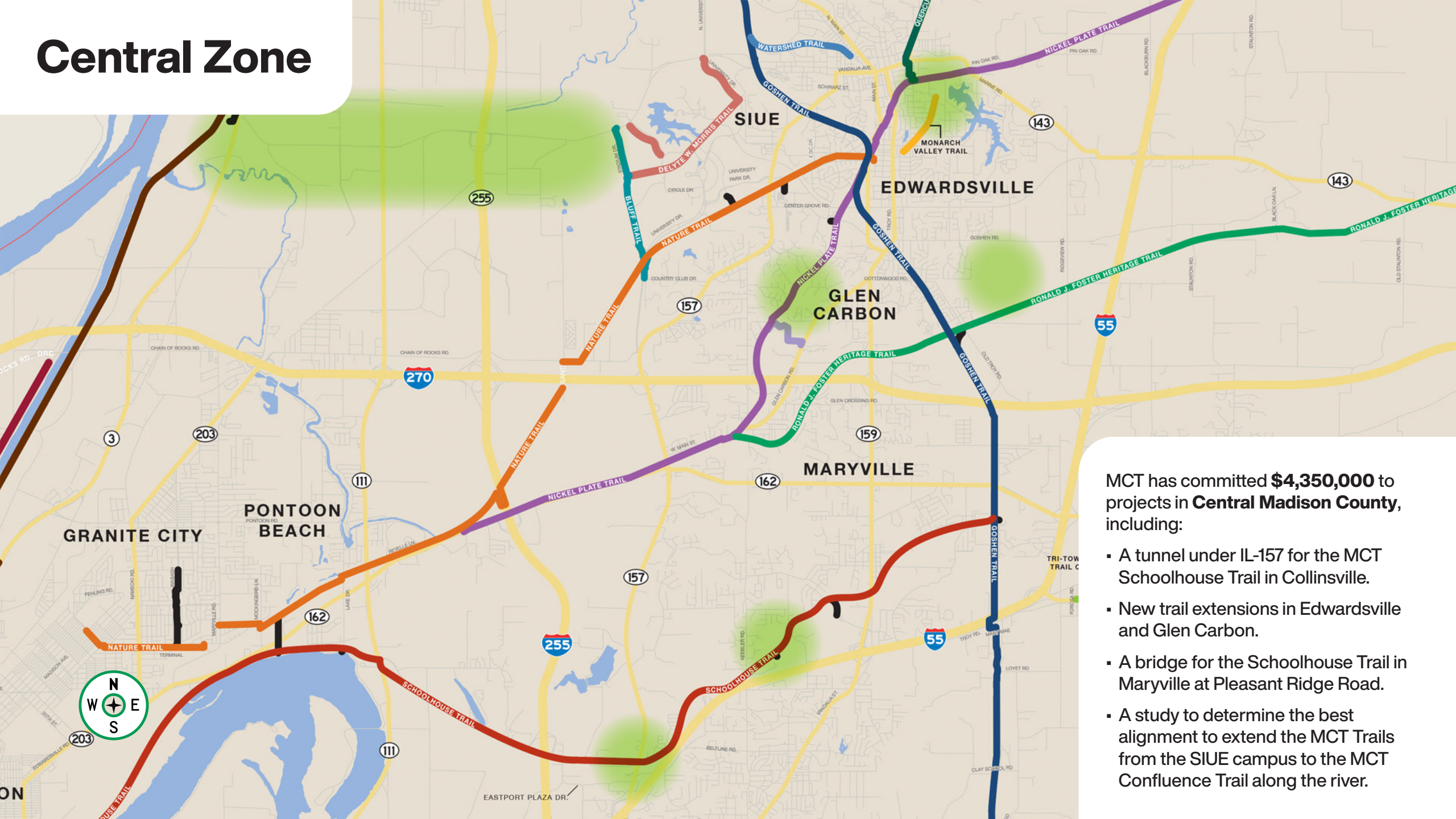
Riverbend Zone



MCT has committed **\$12,150,000** to projects in **7 Riverbend communities**, including:

- Shared use path in Downtown Alton.
- Funds to support the Godfrey Trail from LaVista to Glazebrook Park..
- Trail from the new MCT Eastgate Park & Ride in East Alton to the MCT Confluence Trail.
- Goshen Trail Extension: Extending the MCT Trails into Roxana, Wood River, Bethalto, and South Roxana.

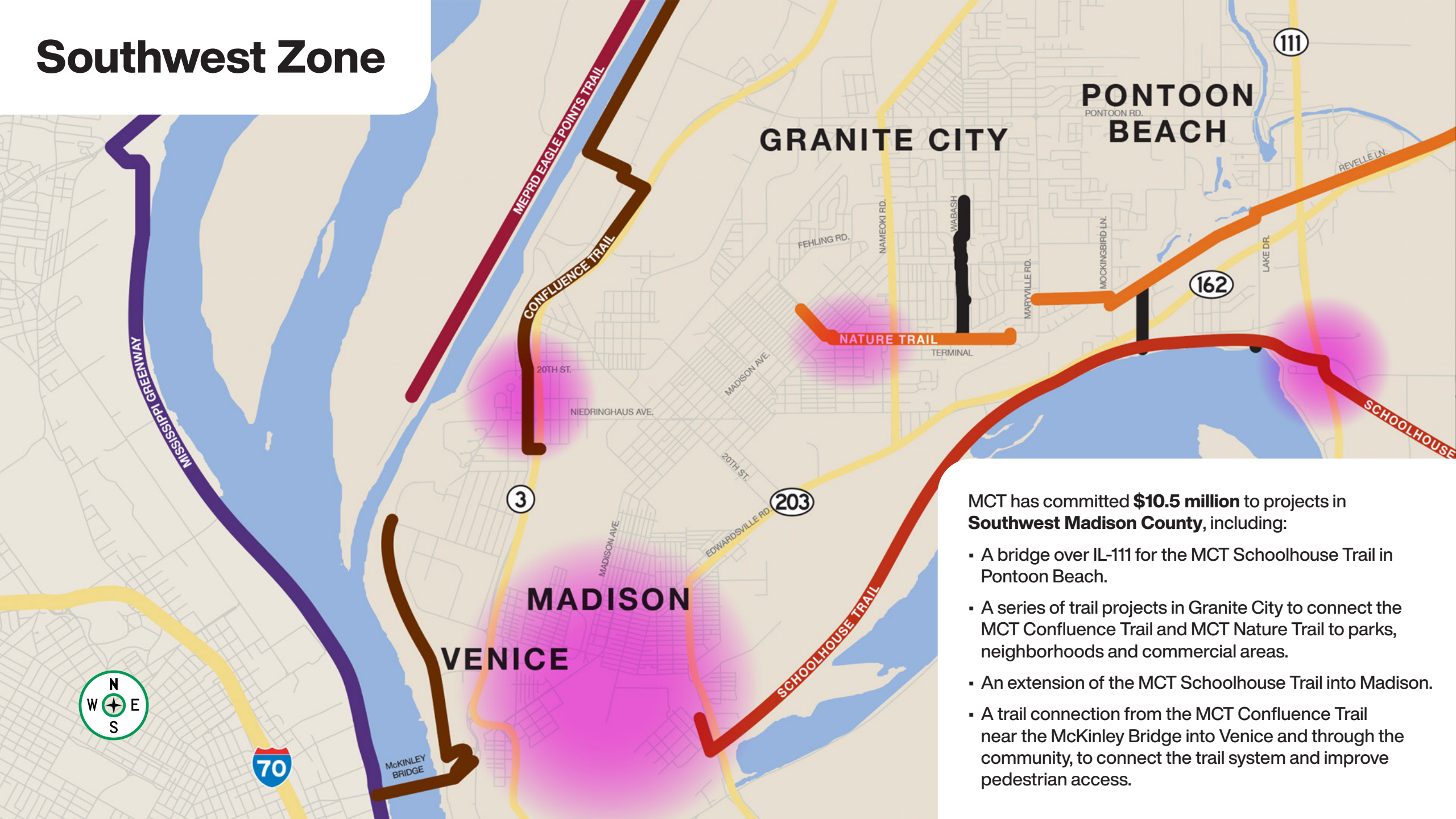
Central Zone



MCT has committed **\$4,350,000** to projects in **Central Madison County**, including:

- A tunnel under IL-157 for the MCT Schoolhouse Trail in Collinsville.
- New trail extensions in Edwardsville and Glen Carbon.
- A bridge for the Schoolhouse Trail in Maryville at Pleasant Ridge Road.
- A study to determine the best alignment to extend the MCT Trails from the SIUE campus to the MCT Confluence Trail along the river.

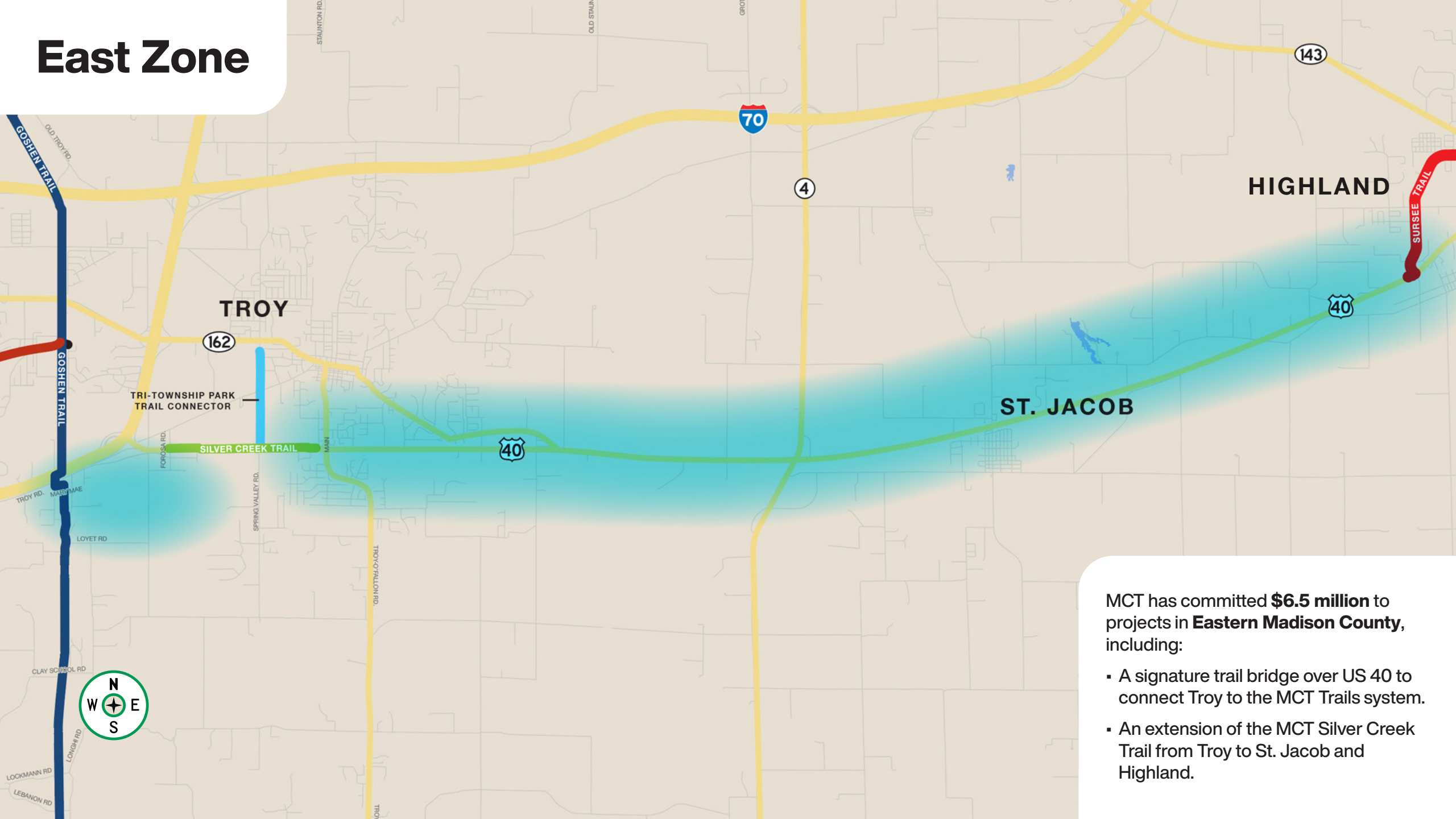
Southwest Zone



MCT has committed **\$10.5 million** to projects in **Southwest Madison County**, including:

- A bridge over IL-111 for the MCT Schoolhouse Trail in Pontoon Beach.
- A series of trail projects in Granite City to connect the MCT Confluence Trail and MCT Nature Trail to parks, neighborhoods and commercial areas.
- An extension of the MCT Schoolhouse Trail into Madison.
- A trail connection from the MCT Confluence Trail near the McKinley Bridge into Venice and through the community, to connect the trail system and improve pedestrian access.

East Zone



MCT has committed **\$6.5 million** to projects in **Eastern Madison County**, including:

- A signature trail bridge over US 40 to connect Troy to the MCT Trails system.
- An extension of the MCT Silver Creek Trail from Troy to St. Jacob and Highland.